



# TMX-NET PRO

Smart and secure tele-control via the internet

# Smart and secure tele-control in the cloud any time and any place



## TMX-Net Pro features

### Universal and open

- Powerful, safe and universal cloud application for remote management of technical installations
- Complete management for automatic measurements, registration, real-time control, alerting, reporting, adjusting settings, remote process control
- Suitable for all conceivable equipment by all brands; telemetry substations, data loggers, alarm systems, PLCs, smart sensor systems, etc.
- Powerful expansion options, such as TWIN web service and scripting/automation

### User-friendly operation and visualisation

- Intuitive operation via standard web browser from PC, tablet and smartphone
- Comprehensive and adjustable authorisation levels
- Well-organised screens that display geographical location, process diagrams, alarm history and measurement graphs, etc.
- Easily adjustable alarm limits, log frequencies, set points, reports, etc.
- Assessment of measurement values by means of manual and automatic data validation

### Security and Uptime

- Guaranteed uptime > 99.8% from tier-3 data centre in the Netherlands
- Secure https communication with dedicated certificate
- Automatic daily backup of all data
- Redundant failsafe execution of all critical system components
- Secure communication links for substations (VPN/APN)
- Active 24/7 monitoring

*“Cyber security of remotely managed technical installations via the internet often doesn’t get the attention it deserves. The developers of TMX-Net Pro stand out with their application of effective security techniques by making the users aware of the options and requirements for a safe tele-control system.”*

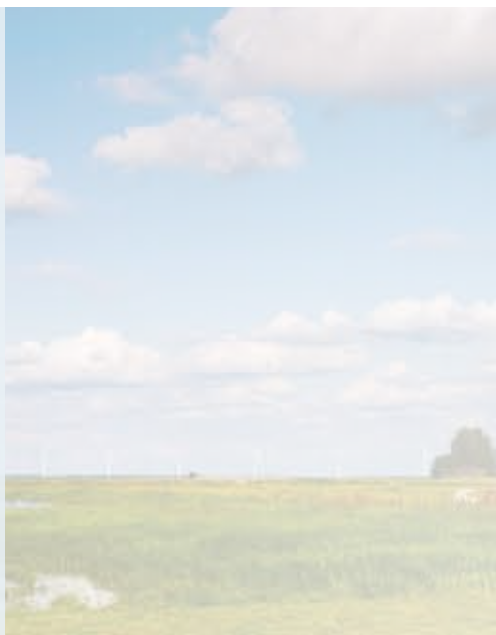
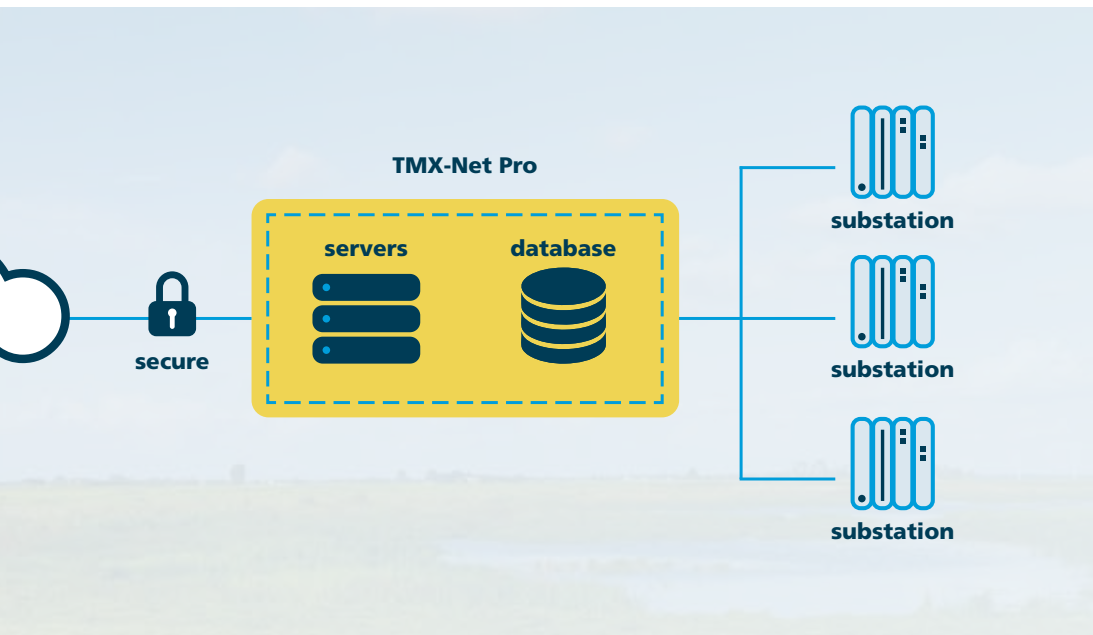
Jeroen Laarakkers B Eng  
TNO Security Consultant

**TNO** innovation  
for life

Network partner of:

**HSD**  
The Hague Security Delta





### TMX-Net Pro brings everything together

TMX-Net Pro is a universal master station for monitoring and control of technical installations via the internet. TMX-Net Pro is a subscription-based, versatile open cloud solution for tele-control that is compatible with all conceivable equipment. A wide variety of solutions is available for application in all types of installations. TMX-Net Pro is extremely secure and brings all your locations together in a well-organised manner.

### TMX-Net Pro, smart and versatile

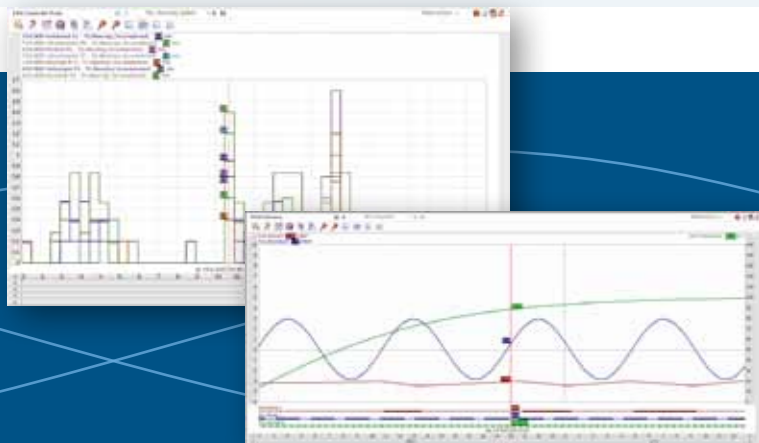
After logging in via your PC, tablet or smartphone, all relevant information will be displayed on a well-organised dashboard. At a glance, you will see the up-to-date status for each location, such as the most important measurement values or alarm data. You can click on the location for more data, graphs or settings. Automatically adjustable validation of measurement data is a standard feature. TMX-Net Pro was developed based on the many years of expertise and extensive experience of many satisfied TMX users.

### TMX-Net Pro is easy to set up by yourself

Due to the many available connections, TMX-Net Pro can be adjusted for communication with all conceivable equipment in technical installations. As a result, you retain the freedom to choose the devices you prefer. Due to the wide variety of user interface preferences, the configuration of an individual user environment can be made in just a few mouse clicks. Since no programmer is needed for any of the standard functions, you have quick insight into the costs and time spent on the organisation and management of the program, and you can quickly and flexibly start using TMX-Net Pro. Should you prefer to have a technician take care of it, TMX collaborates with experienced dealers that will gladly assist you.

*“Rijkswaterstaat Zuid-Nederland [Ministry of Infrastructure and the Environment, region southern Netherlands] in 's-Hertogenbosch has been a satisfied TMX user for years. With TMX-Net Pro, we can monitor hundreds of matrix boards, traffic congestion notification systems and traffic control installations, and also gain a clear understanding of the fault handling process of subcontractors.”*

Marco Hoogenboezem B Eng  
Rijkswaterstaat PPO Noord Brabant





## Service and support



The TMX Service-desk is available to answer all your questions and provides assistance using TMX-Net Pro. Additionally, a Service Level Agreement (SLA) can be selected, which will ensure that you can rely on 24/7 service. A comprehensive TMX training programme is also available. Interesting TMX user meetings are organised to exchange knowledge and experience.

## System links via TWIN

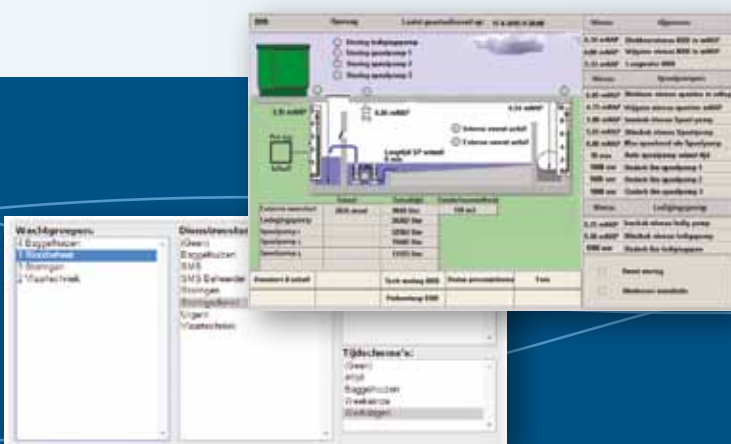
TMX-Net Pro can be linked to other applications, such as systems for maintenance management (CMMS) and geographical information (GIS). The TWIN option (TMX Web service Interface) allows data to be exchanged with other systems in real time. For example, time series with registrations or set points of control programs can be read from and entered into TMX-Net Pro. The TWIN-API uses the standard JSON (JavaScript Object Notation) format, which works efficiently, even with large amounts of data.

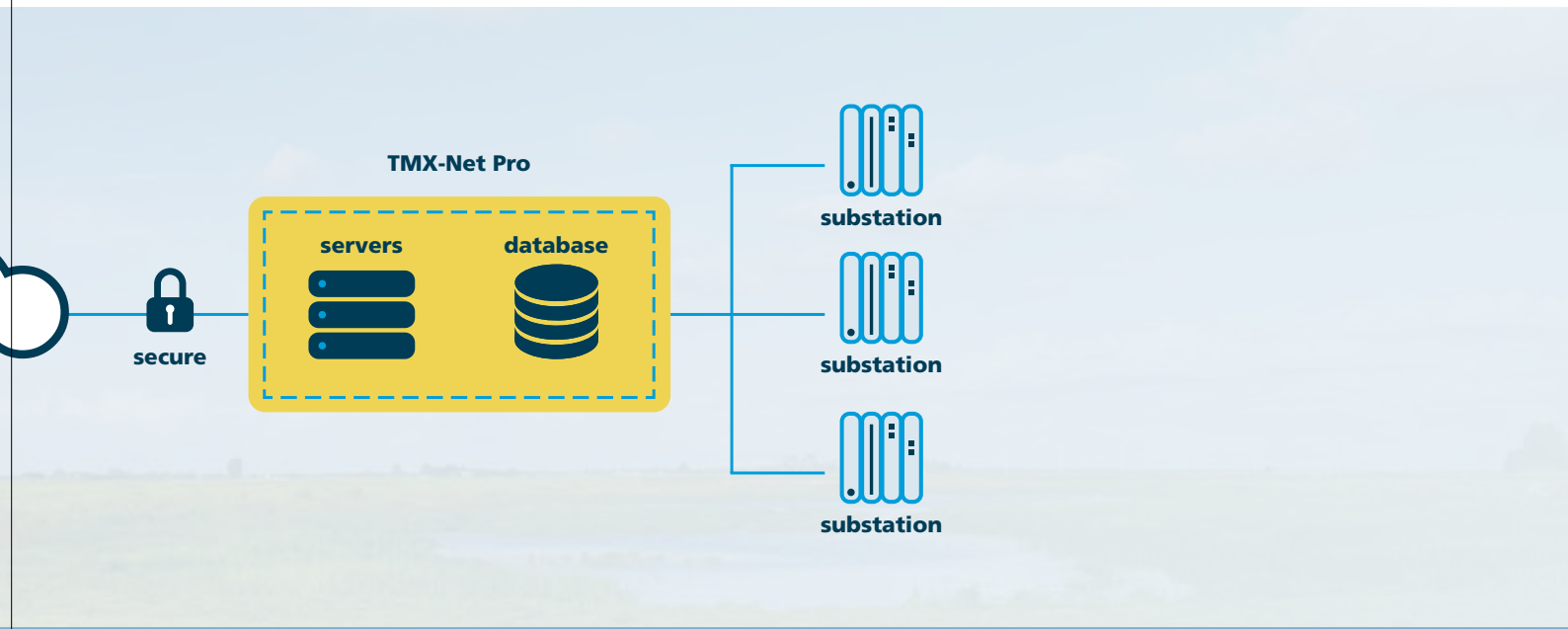
## Alerting and reporting

Reporting faults is obviously an important function. TMX-Net Pro has powerful tools specifically for this purpose, such as variable alarm limits, adaptive schedules and a guard group structure. In addition to alerting via SMS or email, users have the option to have alerts delivered through voice messages. TMX-Net Pro also offers the option of automatic periodic reporting. For example, a PDF file containing the data and layout specified by you can be distributed by email on a weekly basis.

*"TMX-Net Pro provides us with a complete system for monitoring all our sewage, ground-water and precipitation locations. This efficient cloud solution has already proven its practical usefulness to us."*

Pieter Vellekoop B Eng  
Dep. of Public Space (IBOR)  
Municipality of Westland





### TMX-Net Pro is the choice for you, because:

- ✓ Open system; compatible with all devices
- ✓ Low Total Cost of Ownership
- ✓ High uptime guarantee and security
- ✓ TWIN web service for connecting with other applications
- ✓ Options for automated reporting, data validation and scripting
- ✓ Subscription starting from 1 location, full scalability
- ✓ Build with the most modern html5/css3 web technology
- ✓ Years of experience with thousands of installations ensures quality
- ✓ 24/7 monitoring and support



water



sewage



traffic



waste



logistics



agriculture



cooling



other



Follow TMX news on [tmx.nl](http://tmx.nl)

**Kuipers Electronic Engineering B.V.**

Houtkopersstraat 6  
3334 KD Zwijndrecht (NL)  
T +31(0)78 610 03 00  
[sales@tmx.nl](mailto:sales@tmx.nl)  
[www.tmx.nl](http://www.tmx.nl)